



Capital Branch



Central Valley Branch



Feather River Branch



Shasta Branch

November 2010

The Engineerogram

Volume 72, No. 11

President's Message

by Oscar Serrano, P.E., President



It has been a very busy month at the Section. We have all been working hard to transition over to a new administration and to a new year. Thank you Larry Smith, for helping make the transition smooth and painless. Congratulations to all of the new officers. I'm looking forward to working with you all.

In the monthly President's Message column, I will touch on each of the four objectives that I set for the Section earlier this year.

Maintain a Strong Workforce: The holidays are fast approaching and this month we should all be thankful to be employed in these hard times. Over the past few years, many of us have seen a colleague or two have to tackle the daunting task of searching for new employment. Thankfully, many of our colleagues have been fortunate and landed on their feet. Things will get better. I encourage you to be thankful this month.

IN THIS ISSUE

Advertising Rates	2
ASCE Sacramento Section 2010 Outstanding Engineering Project Award Entry Criteria	9
ASCE Sacramento Section 2010 Outstanding Engineering Project Award Entry Form	10
Calendar	3
Capital Branch	5
Central Valley Branch	5
Feather River Branch	5 & 6
History and Heritage	7
Honors and Awards	8
Is Your Membership Information Current?	1
Law and Civil Engineering	5
Legislative Update from Region 9	14
Officer Contacts	2
Outstanding Projects and Leaders	12 - 13
President's Message	1
Region 9 News	14
Fareed Pittalwala Elected Governor of Region 9	3
Sacramento Hydromodification Management Plan	11
Shasta Branch	5
YMF	4

Increase Member Involvement: We are fortunate to be members of the Sacramento Section of ASCE as we have some of the most active Institutes. Last month, the Environmental and Water Resources Institute had another great event that addressed the new flow criteria in the Delta. The Geo-Institute also had a joint meeting with the Association of Engineering Geologists which discussed the evolving contributions of Engineering Geology to dams. Both events were a huge success.

Each of the Institutes "focuses on the technical, educational, scientific, and professional aspects within (each) industry". I encourage you to attend an Institute meeting. Check the ASCE Section website under events (<http://www.asce-sacto.org/Events.htm>) for future Institute meetings or get on an e-mail list for the Institute which suites your specialty.

Increase ASCE Legislative Presence: November is a very important month throughout the country as voters are asked to go to the polls. Many positions are being contested in California and throughout the United States. There are also several propositions that affect everyone in the state and many others at the local level. Time will tell what the voters decide.

Increase Interaction with Students and Younger Members: School is in full swing and with school comes homework and mid-terms. Add to that ASCE student chapter meetings and teams beginning to prepare for concrete canoe, steel bridge and the water competition; students certainly have their hands full. Congratulations to the student officers that have volunteered to lead the charge this year.

The Younger Member Forum (YMF) has also installed new officers. Congratulations to all those who volunteered.

The YMF meetings take place the first Wednesday of every month. Check out the Sacramento Section YMF webpage at <http://www.sacymf.org/> and encourage young staff and co-workers to attend a meeting. All of their events are free.

In closing, I would like to thank Martin Farber for all his work. It's great to learn about local pioneers in our field in your history and heritage column each month. Keep up the good work.

Please let us know what you think:
sacramentosectiongsd@ermail.asce.org.

Thank you,
Oscar

Is Your Membership Information Current?

by Fareed Pittalwala, Past-President

Please ensure that your membership information is up to date with ASCE's national database, as our local system is dependent on your information being current. It's a quick and easy fix that you can accomplish in less than five minutes by going to: <http://tinyurl.com/yhl6pvd>.



The Engineerogram, P.O. Box 1492, Lincoln, CA 95648-1441

(916) 961-2723 (phone and fax) • e-mail: asce@asce-sacto.org • Web site: www.asce-sacto.org

The Engineerogram is the official publication of the Sacramento Section of the American Society of Civil Engineers and made available to ASCE members paying local dues to the Section. It is published regularly at the beginning of the month. **To contribute articles, mail, fax, or e-mail to ASCE/Sacramento Section Executive Secretary, Vivian Mevorah, at asce@asce-sacto.org. Deadline for articles is on the 20th of the month prior to the issue.**

Advertising Rates: Full Page \$250 - A page is 7 1/2" x 9 1/2"
Half Page \$130 - 1/2 page (either horizontal 7 1/2 x 4 3/4; or vertical 3 3/4 x 9 1/2)
Quarter Page \$75 - 3 3/4 x 4 1/4
Professional Card \$150 for a full year - 2 1/2 x 1 1/2 (reduced down from 2 x 3 1/2); OR
 \$175 for a full year for 2 x 3 1/2 size business card

**Classified Ad in
 Newsletter or Website** \$50/100 words - no logo

(To our contributing writers: The Engineerogram reserves the right to make revisions, correct spelling and grammatical errors, to prioritize information and to summarize content. Articles may be shortened as editorial requirements dictate. Questions regarding this policy may be directed to the President of the Sacramento Section. Thank you for your understanding. Editors.)

OFFICER CONTACTS

President	Oscar Serrano, P.E.	530-458-8231	oserrano@colusa-nsn.gov
President-Elect	Jon Balzer, P.E.	916-855-4400	jon.balzer@gcinc.com
Senior Director	Greg Young, P.E.	916-368-9181	gregy@quincyeng.com
Junior Director	Kimberly Brown, P.E.	916-476-6790	kimberlyb@hdrinc.com
Secretary	Mark Quito	916-567-2500	Quito@pbworld.com
Treasurer	Joshua Wagner	530-227-7937	Joshua.A.Wagner@usace.army.mil
Past President 2009-2010	Larry J. Smith, P.E., F.ASCE	916-261-1545	lsmith@calweb.com
Executive Director	Greg Zeiss	-	Greg.Zeiss@hdrinc.com
YMF Board Representative	Kevin Gilton, P.E.	916-858-2419	GiltonKM@bv.com
Younger Members Forum President	Kristy Chapman	916-375-8706	kristyo@blackburnconsulting.com
Region 9 Chair	Chuck Spinks, P.E.	916-797-3811	chuck.spinks@kimley-horn.com
Region 9 Sacramento Section Governor	Fareed Pittalwala, P.E.	916-928-1113	fpittalwala@rbf.com
Executive Secretary	Vivian Mevorah	916-961-2723	asce@asce-sacto.org
Engineerogram Editor	Vivian Mevorah	916-961-2723	asce@asce-sacto.org
Capital Branch President	Thor Larsen, PE	916-973-0356	thor.larsen@edcgov.us
Central Valley Branch President	Anthony Mazzei	-	amazzei@condorearth.com
Feather River Branch President	Amie McAllister, P.E.	530-879-6911	amie.steel@gmail.com
Shasta Branch President	Present status is Inactive	-	-

INSTITUTES

Coasts, Oceans Ports & Rivers Institute	Zia Zafir, P.E.	916-366-1701	zzafir@kleinfelder.com
Construction Institute	Larry J. Smith, P.E., F.ASCE	916-261-1545	lsmith@calweb.com
Environmental & Water Resources Institute	Pal Hegedus, P.E., D.WRE	916-928-5177	phegedus@rbf.com
Geo-Institute	Matt Moyneur, P.E.	916-372-1434	mmoyneur@wallace-kuhl.com
Structural Engineering Institute	Joyce Copelan, P.E., MS	530-908-8372	jcopelan95694@yahoo.com
Transportation & Development Institute	Nader Tamannaie	916-448-1980	ntamannaie@califstructure.com

STANDING COMMITTEE CHAIRS

College Accreditation	Joan Al-Kazily, Ph.D, P.E., M.ASCE	530-756-9530	jalkazily@sbcglobal.net
Disaster Preparedness	Howard Zabel, P.E.	530-622-7493	hzabell@ccmyersinc.com
Education & Awards	Thor Larsen, P.E.	916-973-0356	thor.larsen@edcgov.us
Government Relations	Craig Copelan, P.E.	530-908-4790	ccopelan95694@yahoo.com
History & Heritage	-	-	-
Membership-Life Members	Ray Zelinski, P.E.	-	rczelinski@sbcglobal.net
Scholarship	Eric Polson, P.E.	916-801-6290	polsonengineering@earthlink.net
Sustainability	Robert Roscoe, P.E.	916-679-3994	Rroscoe@sswd.org
Publications	Martin A. Farber, P.E., D.WRE	707-253-9606	kowsoi@juno.com

UNIVERSITIES

California State University, Chico	Samantha Moose, President	530-898-4436	chicoasce@gmail.com
California State University, Sacramento	Jesse Ogren, President	-	president@sacstateasce.org
Univeristy of the Pacific	Caroline Grant, President	-	c_grant@u.pacific.edu
Univeristy of California, Davis	Karan Singh and Neil Hannan	Co-Presidents	ucd.asce.president@gmail.com

For more ASCE activities if you wish to be active in a committee, career opportunities, complete text for the legislative activities, go to the Sacramento Section web site at www.asce-sacto.org, or contact a current officer. To MAKE CHANGES OR RENEW YOUR MEMBERSHIP, go to website: www.asce.org. For MEMBERSHIP APPLICATIONS, please e-mail to memapp@asce.org.

MASTER CALENDAR

Date(s) (Times)	Event	Location	Information
2010			
November			
Tuesday, 2nd	Central Valley Branch Meeting, Page 5	Marie Calendar's, 2628 W. March Lane, Stockton	Anthony Mazzei, amazzei@condorearth.com
Wednesday, 3rd 5:30 pm	YMF Mixer	Malabar American Cooking, 2960 Del Paso Road, Sacramento, CA	www.sacymf.org
Saturday, 6th TBD	YMF Officers Retreat	TBD	www.sacymf.org
Wednesday, 10 6:00 pm	Sacramento Valley Professional Chapter of Engineers Without Borders Meeting	The Fox and Goose, 1001 "R" Street, Sacramento, CA	Mark Quito, 916-567-2500, quito@pbworld.com
Monday, 15th 6:00 pm	Sacramento Section Board Meeting	RBF Consulting, 4540 Duckhorn Dr., Suite 202, Sacramento, CA	Fareed Pittalwala, 916-928-1113
Tuesday, 30th 11:30 am	Capital Branch Meeting, Page 5	Radisson Hotel - Crocodiles Lounge, 500 Leisure Lane, Sacramento, CA	Thor Larsen, 916-973-0356 thor.larsen@edcgov.us
December			
Wednesday, 1st 5:30 pm	YMF Holiday Party	Old Spaghetti Factory 1910 "J" Street, Sacramento, CA	www.sacymf.org
Wednesday, 1st 12:00 noon	Feather River Branch Meeting, Page 5	El Zarape Restaurant (530-755-2888), 1005 Stafford Way, Yuba City, CA	Amie McAllister – 530.228.6003; amie.steel@gmail.com
9th - 10th	Pipe Selection for Municipal Facilities	Doubletree Hotel, 2001 Point West Way, Sacramento, CA	1-800-548-2723 www.asce.org/conted/seminars
2011 February			
Tuesday, 15th	Sacramento Chapter of EWRI Hosting the Second Annual Symposium	Hyatt Regency, Downtown Sacramento, CA	

Conferences	Section Officer Meetings	Seminars	YMF Events
Section Meetings	Region 9 Events	Outreach Events	Student Events
Branch Meetings			

Fareed Pittalwala Elected Governor of Region 9

by Camille Haley, ASCE National

Reston, Va. - Fareed S. Pittalwala, P.E., a project manager and associate for RBF Consulting, was recently elected as a governor of Region 9 of the American Society of Civil Engineers (ASCE). Region 9, one of the Society's ten regional governing boards, represents members from California. Fareed began his term on Oct. 1, 2010.

Fareed's professional experience includes commercial and residential development projects. He also improves domestic water projects including pump stations, pipelines, storage tanks and well rehabilitation. Prior to his position with RBF Consulting, Fareed was a structural

engineer with the Chicago Bridge and Iron Company.

An active member of ASCE, Fareed is a mentor for the eCareer Mentor Program and chair of the Past Presidents Committee of the Sacramento Section.

He has also served as the executive director of the Younger Member Forum, a member of the Infrastructure Symposium Committee and president of the Sacramento Section.

Fareed received his bachelor's degree in civil engineering from the University of Arizona. He is a licensed professional engineer in California, and is a resident of Sacramento, Calif.

Founded in 1852, the American Society of Civil Engineers represents more than 144,000 civil engineers worldwide and is America's oldest national engineering society. For more information, visit www.asce.org.



NEW OFFICERS AND NEW EVENTS AT OCTOBER'S BUSINESS MEETING!

At October's Business Meeting, new officers and committee chairs were elected to serve for the 2011 year at YMF! Please take a moment to welcome new faces and welcome back returning officers and chairs!

In addition to our elections, officers reminisced about the good, the bad, and the ugly in the previous year; and as a club first, past-president Kevin Gilton presented the past officers and chairs with certificates of appreciation for a job well done in the previous year. The first annual President's Award was also presented to Education Director Jill Hendrickson for her continued efforts in making our ASCE Review Courses a success again this year! Thanks to all officers and chairs, old and new, for your continued commitment to our ever evolving and dynamic group!

In addition to this year's awards presentations, we also had a slew of firsts, including:

- Investigated the creation of a YMF endowment fund
- Creation of the Government Affairs Chair
- Creation of our new and popular Facebook page
- Strong presence at WRYMC 2010 in San Diego
- Continued improvements to our flagship fundraising activity,

the semi-annual PE review courses

- Successful bowling night fundraiser social in March to benefit civil engineering students at CSU Chico
- Awarded a record number of scholarships in June
- Donated over \$10,000 to the Sacramento Make-A-Wish Foundation
- Created the Awards & Recognition Committee

NOVEMBER MIXER

Don't forget November's mixer! The Mixer will be held at Malabar American Dining on Wednesday, November 3, 2010 at 5:30 pm. Join us to hear the riveting tales of our very own Programs Chair, Elias Karam, as he describes his recent design-build work in Utah. There's food, there's fun, there's networking – don't miss it!

HOLIDAY PARTY

Mark your calendar for the upcoming Holiday Party! Details will be forthcoming, but save the date on Wednesday, December 1 for our annual holiday party, to be held at Old Spaghetti Factory in downtown Sacramento! This year, we are hoping to add an outreach opportunity as part of our holiday party so stay tuned for more on that from Outreach Chair Randi Hines!

Ever wonder who your officers were . . . see their pictures below, and come to our next event to put a name to that face!



UPCOMING EVENTS

- * Mixer, Wednesday, November 3, 5:30 PM, Malabar American Dining, 2960 Del Paso Road, Sacramento, CA
- * Officers Retreat, Saturday, November 6, Time and location TBD
- * Holiday Party at Old Spaghetti Factory (1910 J Street, Sacramento, CA 95814), Wednesday, December 1, 2010, 5:30 pm

*For more information, visit
www.sacymf.org*

The Law and Civil Engineering

by Eugene L. Bass, Esq.

Foreclosure of the Mechanics' Lien

Prior articles have discussed various of the functional and procedural aspects of mechanics' liens. In particular, it should be apparent that timing and meeting deadlines is an important element of mechanics' liens and their enforcement. It has also been shown that if timing requirements are not met, lien rights can be lost.

Although the proper recording of a mechanics' lien and adherence to all the prerequisites can establish a valid lien, further steps must be taken within prescribed time limits to enforce the lien.

The law provides that a recorded mechanics' lien cannot be effective for a period longer than 90 days after the date of recording unless, within that 90 day period, a lawsuit to foreclose the lien is filed in the proper court. The law also provides that if the lien claimant fails to commence an action to foreclose the lien within the statutory time limitations, the lien shall automatically become null and void and of no further force and effect.

Often lien claimants believe that once the lien has been recorded, nothing further is required. That is not true. While title companies may react very conservatively and be concerned about mechanics' liens over 90 days old, and in some cases treat them as still valid, the lien claimant cannot rely on such a result.

When there is a payment dispute, the non paying party often begins to show more interest once a lien has been recorded. Settlement negotiations that have not moved can be prompted and the parties will begin talking more seriously about resolution of the issues. During the negotiations, the lien claimant must be particularly aware of the 90 day period for filing a lawsuit to foreclose the lien. The other party may be aware of the 90 day limit and may seek to drag the negotiations out past the 90 days and cause the lien to become invalid. Once the lien becomes invalid the bargaining position of the lien claimant can be significantly diminished and there can be less urgency in resolution of the claim.

Two options exist if the 90 day limit is approaching and no resolution of the dispute has been reached. If the period for recording liens has not expired, the lien claimant can record a new mechanic's lien. The old lien should be released at the same time to avoid doubling of the lien amount. With the recording of a new lien, a new 90 day period will commence, thus postponing the final date for filing a lawsuit to foreclose and, hopefully, allowing time to conclude the resolution of the dispute.

The other option available to extend the period for filing a lawsuit to foreclose the mechanics' lien beyond the 90 day period is to record a "Notice of Credit." The notice serves as an agreement between the lien claimant and the owner to extend the foreclosure lawsuit filing period. The time period

for filing the lawsuit to foreclose cannot be extended beyond one year from the date of completion of the work of improvement, however.

The author's discussion of legal ramifications of the particular case(s) are provided only for educational purposes and should not be relied on as legal advice. If you have a specific legal problem, please consult with your attorney.

Capital Branch Meeting - November 30th

The next luncheon meeting of the Capital Branch is scheduled for **Tuesday, November 30th** at the Radisson Hotel - Crocodiles Lounge, 500 Leisure Lane, Sacramento. (Take Cal Expo exit off highway 160.) Social at 11:30AM, luncheon and speakers at noon.

Topic: Sacramento Downtown Railyards Infrastructure work

Elias Rashmawi, Railyards Director of Land Development; and **Hank Doll**, Construction Manager with Vali Cooper will present an update on the various infrastructure projects at The Railyards project in downtown Sacramento. Learn about the 5th and 6th Street bridges, the status of the mainline track relocation project, and the first phase of renovation of the Historic Central Shops.

For more information about the Capital Branch meetings, please contact Thor Larsen at thor.larsen@edcgov.us, 916-973-0356.

Central Valley Branch Meeting - November 2nd

For more information about the Central Valley Branch meetings, please contact Anthony Mazzei at amazzei@condorearth.com.

Feather River Branch Meeting - December 1st

The next meeting of the Feather River Branch will be on Wednesday, December 1st at 12:00 noon. Please see Page 6 in this issue for details. If you have suggestions or recommendations for a meeting topic or location, please contact Amie McAllister at amie.steel@gmail.com or Shane Cummings at sdcumings@handk.net. We are looking to increase our membership participation in our monthly meetings and regular community outreach activities, so please drop us some suggestions.

Shasta Branch

The Sacramento Section is currently looking for volunteers who would like to take a leadership position within ASCE and re-invigorate the Shasta Branch. For more information, contact Section President Oscar Serrano at oserrano@colusa-nsn.gov or Region 9 Governor Fareed Pittalwala at fpittalwala@rbf.com.



**FEATHER RIVER BRANCH
NEWS
November 2010**

Thanks to Jody Jones, Director of Caltrans District 3 for her informative meeting in October. Mrs. Jones discussed current Caltrans District 3 construction projects, as well as those expected to go to construction in the next 2 years, and talked about the future financial and workload situation. She has been District 3 Director for 9 ½ years. District 3 of Caltrans includes 11 counties: Butte, Colusa, Glenn, Yolo, Sacramento, Yuba, Sutter, El Dorado, Placer, Nevada and Sierra.

The following are up-coming Feather River Branch meetings and events. The meetings are open to all civil engineers, architects, geologists, and anyone interested in learning more about the subject matter scheduled to be discussed. As always, contact one the officers listed at the bottom of the page for ideas or suggestions on future events.

December 1, 2010, Wednesday **LUNCH MEETING at 12:00 pm**

Robert E. Wallace, Executive Director of Concrete Promotion Council of Northern California (CPCNC)

Rob Wallace is currently the Director of CPCNC and has over 29 years of experience in the ready mix concrete industry. The CPCNC is a non-profit association dedicated to educating owners and designers about environmentally friendly ready mix concrete products that significantly contribute to gaining LEED credits. One such product is Pervious Concrete Pavements for Stormwater Management, a newer product offered by the industry. This product can be a good fit to help civil engineers achieve multi-tasking hardscapes, parking areas and sidewalks. Mr. Wallace will provide project examples and design information on the use of pervious concrete, including how to effectively utilize it in clay soils. In addition, the significant cost savings and advantages Pervious Concrete pavements offer will be discussed. It is also worth noting that both Conventional Concrete and Pervious Concrete pavements help toward achieving LEED points in several categories. Attend this highly informational presentation for additional details.

Please note that the ASCE Sacramento Section President, Oscar Serrano, will be attending the lunch meeting. Mr. Serrano will be providing the Branch with an ASCE Sacramento Section update.

RSVP is required for Restaurant reservation of banquet room. Send to: amie.steel@gmail.com

Location – El Zarape Restaurant (530-755-2888), 1005 Stafford Way in Yuba City

Lunch cost is \$15/person. Student Discount Rate is Free! (Additional cost for alcoholic beverage)

****Tentative** February 2011 Meeting**

Large Solar Projects Presentation

2010-2011 Branch Officers:

President, Amie McAllister – 530.228.6003; amie.steel@gmail.com

President-Elect, VACANT

Secretary, Tammie Watkins – 530.893.4640; tammie_watkins@URSCorp.com

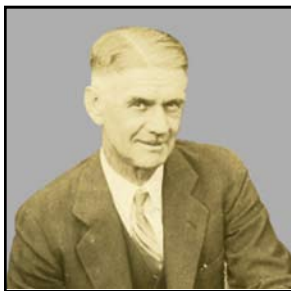
Treasurer, Radley Ott – rott@townofparadise.com

History and Heritage

by Martin A. Farber, PE, D.WRE

(Story reprinted from California Highways and Public Works, Vol 16, Apr 1938, p28)

On September 9, 2010, officers, members, and guests of the Sacramento Section of ASCE gathered at the Holiday Inn, Capitol Plaza, for our annual Installation and Awards Dinner. Many of the Sacramento Section's awards are named after civil engineers from this area's history, now deceased, that the Section has chosen to honor for their notable contributions to the profession, this Society, our community, the country, and the world. Each month, in this column, we will profile one of these remarkable engineers.



This month's historic engineer:
Charles S. Pope

Charles Stockton Pope was born on August 10, 1874, at Fort Stockton, Texas, the son of Dr. Benjamin F. Pope, a distinguished surgeon in the U.S. Army. He received his early education at Army schools, private and public schools, graduation from Stanford University with

an A.B. in C.E. in 1897. While at Stanford, he was a member of the Chi Psi fraternity, varsity track team in 1896 and 1897, and was elected perpetual class president in his senior year.

Mr. Pope began his professional career in 1898, on land and irrigation surveys in Kern County. In 1900 and 1901 he was assistant engineer on power projects for the Standard Electric Co., continuing similar work in 1902 and 1903 for the North Shore Railroad and Stanislaus Water and Power Co. During 1904 to 1906 he was engaged as surveyor for the King of Arizona Mine, and in private practice at Los Angeles. In 1907 he entered the engineering department of the City of Los Angeles where he was principally engaged as highway engineer in charge of paving work until the year 1915. From 1916 to 1921 he was associated with Warren Brothers as district engineer on promotion and consulting work for asphalt pavement projects in California and Nevada.

In January, 1922, he began his service with the California Highway Commission as Assistant Engineer, specializing on asphalt pavement work. In September, 1923, when the Construction Department was organized, Mr. Pope was appointed head of this department as Construction Engineer in charge of the Materials and Research Laboratory and of all highway construction, except major bridges. The laboratory assignment was terminated in 1928 when the Materials and Research Department was organized. As Construction Engineer, Mr. Pope also had charge of the State Prison Camps, involving supervision of the construction of many miles of heavy mountain roads and of problems concerning the rehabilitation of prisoners. Mr. Pope passed away on March 16, 1938, at Riverside, while on an inspection trip of recent storm damage to highways in southern California.

To his keen, analytical mind and his constant interest in research can be attributed many of the improved methods of construction of our highways. His continued effort and study are primarily responsible for the development of the modern high type asphalt concrete pavement as now constructed by the State. His numerous technical and scientific papers, articles, and discussions contributed materially to the knowledge of highway engineering and are widely recognized as authoritative.

He was an active member of the American Society of Civil Engineers, serving as president of the Sacramento Section in 1924 and on numerous committees. He was also a member of Sacramento Lodge No. 40, Free and Accepted Masons, the Sutter Club, San Francisco Engineer's Club, California Museum Association, and a former member of the Sutter Tennis Club and the Del Paso Country Club.

Auburn
(530) 887-1494

Modesto
(209) 522-6273

West Sacramento
(916) 375-8706

- Geotechnical
- Forensics
- Construction Services

www.blackburnconsulting.com

**ANDREGG
GEOMATICS**

We put your project on the map.™

GUIDED BY TECHNOLOGY
MEASURED WITH PRECISION
ANALYZED BY EXPERTS

LAND SURVEYING
MAPPING
GEOMATICS
LAND PLANNING

800/400.7072
530/885.7072
www.andregg.com

AUBURN | FAIRFIELD | TRUCKEE | RENO

Honors and Awards

by Martin A. Farber, PE, D.WRE

Every year in September, officers, members, and guests of the Sacramento Section of ASCE gather for our annual Installation and Awards Dinner. An important part of the festivities is the presentation of awards offered by our Section for outstanding individual achievement. Each month, in this column, we will profile one of these award-winning engineers.



This month's outstanding professional: **Louay Owaidat**, winner of the Charles S. Pope Award for Organizing Achievement in Construction Engineering.

Louay Owaidat is President and Chief Executive Officer of Magnus Pacific Corporation, a national environmental and geotechnical construction company with headquarters in Roseville, CA and offices in Denver, CO, and Dallas, TX. As President of Magnus Pacific, Mr. Owaidat oversees all aspects of the company including health & safety, quality assurance, operations, finance, administration, marketing, and business development. He also provides technical expertise to support the design, planning, and execution of Magnus Pacific's geotechnical construction and site remediation projects throughout the United States.

Mr. Owaidat holds a B.S. in Civil Engineering from the University of Missouri, Rolla, MO and an M.S. in Civil Engineering from Washington University, St. Louis, MO. After starting his professional career as a field engineer in 1989 Mr. Owaidat ascended through the positions of project engineer, project manager, and regional manager to become President/CEO of his own company.

Over his twenty-year career Mr. Owaidat has successfully overseen the construction of more than 200 specialty environmental, civil and geotechnical construction projects with a combined total value of more than \$500 million. His most noteworthy projects include a 3.2 million square foot soil-cement-bentonite cutoff wall in the American River Levee in Sacramento, CA which is the largest project of its kind in the United States, the largest set-back levee in Northern California, and the Rio Salado Town Lake, a 200 acre man-made lake in the middle of the Salt River in Tempe, Arizona.

Many of the projects that Mr. Owaidat has managed throughout his career have received awards for excellence, including:

- Outstanding Project of the Year for Parks and Recreation – 2009 – American Society of Civil Engineers, Sacramento Section
- Contractor of the Year (Pocket Geotechnical Cutoff Wall) – 2006 – U.S. Army Corps of Engineers South Pacific Division
- Outstanding Project of the Year (Sacramento River Levee) – 2005 – American Society of Civil Engineers – Sacramento Section

- Contractor of the year (Oak Ridge National Laboratory) – 2003 – Bechtel Jacobs
- Project of the year (Rio Salado Town Lake in Tempe, Arizona) – 1999 – American Public Works Association

Mr. Owaidat is a recognized expert in the design and construction of slurry walls. He is also an expert in applying in-situ and ex-situ soil mixing methods to solidify, stabilize or improve soils for site remediation and geotechnical applications. He serves as a Director on the Board of the Construction Institute-American Society of Civil Engineers and has authored or co-authored twelve technical papers on levees, soil improvement and slurry wall construction.

Mr. Owaidat actively supports his community. He chairs the scholarship fundraising committee of the Construction Institute which awards scholarships to deserving civil and construction engineering students. He also chairs and organizes fundraising events for St. Jude Children's Hospital and serves as a volunteer soccer coach and sponsor for the local youth soccer league. Mr. Owaidat supports a major Civil engineering University Graduate program on soil piping and seismic effect on different types of slurry walls. As a result of his support, graduate students are performing research on issues of the highest importance to our local communities. He resides in Roseville, California with his wife Maya and his children Hana, Julia and Malek.

The Charles S. Pope Award for Outstanding Achievement in Construction Engineering is presented annually by the Sacramento Section of ASCE. The outstanding engineers who have received this award are:

- 2008 Larry J. Smith
- 2009 Melissa Woodruff
- 2010 Louay Owaidat



Geotechnical Engineering
Engineering Geology
Environmental & Ecological Services
Earthwork Services
Construction Materials Testing
and Inspection

3050 Industrial Blvd.
West Sacramento,
CA 95691
Phone: (916) 372-1434
Fax: (916) 372-2565
www.wallace-kuhl.com

West Sacramento • Stockton • Reno

GEOTECHNICAL ■ ENVIRONMENTAL ■ MATERIALS



GEOCON

Rancho Cordova - 916.852.9118
Rocklin - 916.870.6888
Fairfield - 707.732.4224

Success Built on Service

SACRAMENTO LIVERMORE CARSON CITY PORTLAND
BURBANK MURRIETA BAKERSFIELD SAN DIEGO
WWW.GEOCONINC.COM

ASCE Sacramento Section 2010 Outstanding Engineering Project Award Entry Criteria

The Sacramento Section Outstanding Civil Engineering Project Award is presented by the Sacramento Section of ASCE to a project that demonstrates the greatest engineering skills and represents the greatest contribution to civil engineering progress and to society. In addition to the Outstanding Project of the Year award, additional subcategory awards will be given to projects of significance for their particular category of civil engineering. The sub-categories are listed on the Entry Form and below. Given to the project rather than to an individual, the Award(s) honor the outstanding work of the many engineers who have contributed to the project.

Rules:

1. The project must be predominantly civil engineering work.
2. The project must be located in the Sacramento Section area.
3. The project must meet one of the following eligibility criteria:
 - Bridges, tunnels, waterways, structures, roads: eligible when carrying traffic.
 - Water supply, flood control facilities: eligible when ready to take the full design head of water.
 - Power dams: eligible when the major civil-engineered construction is completed.
 - Fuel power plants, heating or cooling facilities: eligible when power goes on-line.
 - Buildings and structures: eligible when ready for use.
 - Airports and other similar large developments: eligible when initial phase is 75% operational.
 - Water supply, waste disposal: the entire project is eligible when its initial phase is 50% operational.
 - Military projects (such as bases, launching units and harbor facilities): eligible for their engineering aspects.
 - Urban development or recreation facilities: When open for public use.
 - Natural resources restorations: When restoration is complete

The judging committee will determine the eligibility of projects not categorized above.

Judging Criteria:

1. Contribution to the well-being of people and communities.
2. Resourcefulness in planning and solving design challenges.
3. Pioneering in use of materials and methods.
4. Innovations in construction.
5. Impact on physical environment.
6. Beneficial as well as adverse effects of the project, including aesthetic value.

Entry Format:

The award entry should be in the form of a newsletter article, similar to the Outstanding Projects and Leaders column in The Engineerogram. The entry should inform the reader about the project and emphasize the appropriate items listed in the judging criteria above as well as any significant features of the project. Photos, images, and/or drawings of significance should be included with appropriate and informative captions.

Nominations:

1. Nominations may be submitted by any ASCE - Sacramento Section member.
2. Nomination materials must be received by January 7, 2011, for projects meeting eligibility in 2010.
3. Five (5) copies of the nomination must be submitted and accompanied by the Entry Form.
4. A non-winning project from an earlier year may be renominated if it meets the eligibility rules.
5. Send Project Award to Fareed Pittalwala, 4540 Duckhorn Drive, Suite 202, Sacramento, CA 95834-2597.
6. e-mail of electronic files can also be sent to: fpittalwala@rbf.com

Nominations will be judged by a panel comprised of Awards Committee (made up of past presidents or other section officers) of the Sacramento Section. A plaque for permanent display will be given to the project owner and a certificate to the designer by the Section in an award presentation ceremony as part of Engineers Week in February. For further information, contact the ASCE office at 916-961-2723 or ascesac@asce-sacto.org.

Additional Categories:	Small Project (under \$5.0 million)	Structural	Water/Wastewater
	Environmental	Geotechnical	Architectural
	Transportation and Development	Sustainability	Bridge

2010 ASCE Outstanding Engineering Project Award Entry Form

General Information:

Please complete the following information *and submit 5 copies with a letter explaining the project and stating why you feel this project should receive this award.*

Entries Due: January 7, 2011

Please send this information to:

Fareed Pittalwala
ASCE Sacramento Section
4540 Duckhorn Drive, Suite 202
Sacramento, CA 95834-2597
e-mail: fpittalwala@rbf.com

Entries should meet the entry criteria stated for this award, will not be returned, and will become the property of ASCE, Sacramento Section.

Project Information:

Project name (exactly as it should appear on a plaque):

Project location (city, state):

Completion date:

Enter up to three (3) categories to be considered for in addition to Project of the Year:

Small Project ___ Structural ___ Water/Wastewater ___ Environmental ___

Geotechnical ___ Architectural ___ Transportation ___ Sustainability ___ Bridge ___

Entrant Information:

ASCE Member: ___ Yes ___ No

Sacramento Section Member: ___ Yes ___ No

Submitted by: _____

Title: _____

Employer: _____

Address: _____

City: _____ State _____ Zip _____

Phone _____ Fax _____

Signature _____ Date _____

Project Owner Information:

Project owner (attach addendum for more names) _____

Contact Person: _____

Address _____

City: _____ State _____ Zip _____

Phone _____ Fax _____



Free Community Workshops - Sacramento Hydromodification Management Plan

The Sacramento Stormwater Quality Partnership will hold two public informational workshops related to the Sacramento Hydromodification Management Plan (HMP) in December 2010. The future HMP standards will require that certain development projects be designed to maintain the pre-development hydrology in order to protect local creeks from erosion and associated habitat degradation. The identical workshops will provide information on the Sacramento HMP approach and implementation schedule, applicability map, susceptibility assessment, mitigation guidance and tools.

Who Should Attend: The development community, public agency planners and engineers, environmental groups, regulators, and interested community members are encouraged to attend.

Workshop Format and Registration: The agenda for the two workshops will be identical and the discussions may vary depending on questions from the attendees. No registration or fee is required to attend these public workshops.

Locations	Date/Time
City of Rancho Cordova American River Room Rancho Cordova City Hall 2729 Prospect Park Drive Rancho Cordova, CA 95670	Thursday, December 9, 2010/ 1-5 pm
City of Elk Grove City Council Chambers 8400 Laguna Palms Way, Elk Grove, CA 95758	Tuesday, December 14, 2010/ 1-5 pm

For More Information:

Hong Lin, City of Sacramento hlin@cityofsacramento.org

Dan Gwaltney, County of Sacramento GwaltneyD@SacCounty.NET

<http://www.sacramentostormwater.org/development.asp>

Outstanding Projects and Leaders

*The Story and photos by
Magnus Pacific Corporation, Roseville, CA*

This month's outstanding project: **School Park Preserve Phase II, Auburn, CA**

Magnus Pacific team members constructed the School Park Preserve Phase II in Auburn, CA in May of 2007. The School Park Preserve was designed as a mix of open space, park, oak preserve, and amphitheater in the heart of historic Auburn. The 4.13 acre site has been in existence for at least 70 years and lies North of High Street and South of Lincoln Way in the vicinity of several public schools.



Workers pour the foundation of a new pedestrian bridge (lower left foreground) as the concrete pump (right bank) delivers fresh concrete across the channel while leaving the restored streambed untouched. Boulders were placed in the streambed for a more natural appearance. In the background, a black liner covers a freshly-poured concrete retaining wall. White tubes mark the location of some of the restored streambed vegetation.



The unfinished sideslopes of the restored channel temporarily appear to be terraced. Each step is held in place by a geotextile fabric mat. In this reach, not all boulders will be placed at the very bottom of the channel. On the left, workers are placing what appears to be formwork. The boards will actually hold decomposed granite, which will be used to create a walking path through the park.

Highlights of the project included (1) the restoration of surface flow on Lincoln Creek from an underground diversion, (2) the construction of flood control features, (3) restoration of the Cooper Amphitheater, and (4) the handling and disposal of natural occurring asbestos (NOA).



A new pedestrian bridge is shown, flanked on both ends by a historic stone wall. The new wall will have a stone veneer that will match the existing wall. Another headwall appears in the foreground.

About 50 years ago Lincoln Creek, which runs laterally across the site, was backfilled and diverted underground through culverts to create playing fields for the local school on the adjacent floodplain. The fill material used to complete the work provided a weak structural foundation because it was poorly compacted, graded and saturated with groundwater. The fill material also contained Serpentine rock fragments that included Chrysotile, an asbestos mineral harmful to human health if inhaled. The presence of Chrysotile throughout the fill area necessitated strict air monitoring and dust mitigation during construction.



Workers place geotextile fabric on the side slope of the restored channel. The geotextile is used for improved erosion control and slope stability. The geotextile fabric is a composite, a combination of natural and manmade fibers.

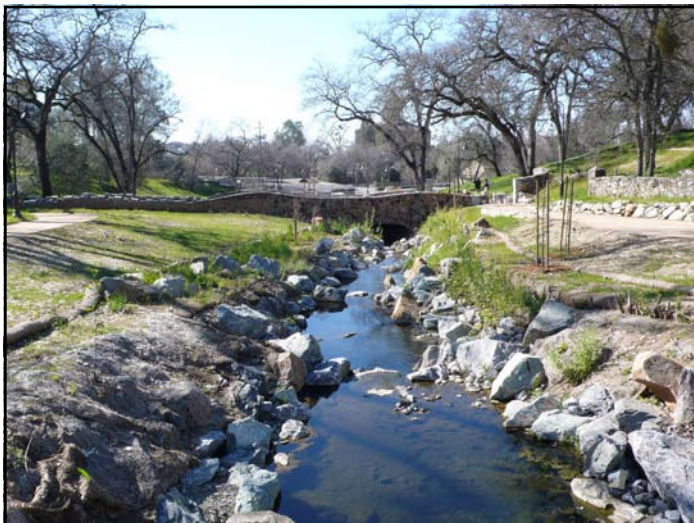
Continued on Page 13

Outstanding Projects and Leaders - Continued from Page 12



A new wooden pedestrian bridge is shown in the lower left foreground. Farther away, also on the left, two workers stand on the freshly-placed decomposed granite walking path. In the streambed, some of the freshly-planted vegetation is already sprouting. In the far background, more of the historic stone wall is visible.

The City of Auburn developed plans to restore surface flow on Lincoln Creek and to create a park and oak preserve on the adjacent land. The restoration included demolishing existing structures in the vicinity of the creek, installing a bypass system to divert continuous flows around the work area, removing the existing culvert, excavating and disposing of the previously placed asbestos-containing fill material, and redefining the flow of the Lincoln Creek corridor by installing a network of rock riffles and step pool structures. The work also included constructing concrete headwalls and footings,



As flow is restored, the nearly-completed project begins to take on a more natural appearance. Emergent vegetation has sprouted on both banks, below freshly-planted saplings on the right bank. The terracing seen in the preceding photos is now invisible. Stone veneer on the new pedestrian bridge in center background matches the historic stone walls on either bank. New decomposed granite walking paths are visible on both banks. This view also illustrates the difficulty of working around mature oak trees, historic stone walls, and other natural or historic features that had to be protected and preserved.



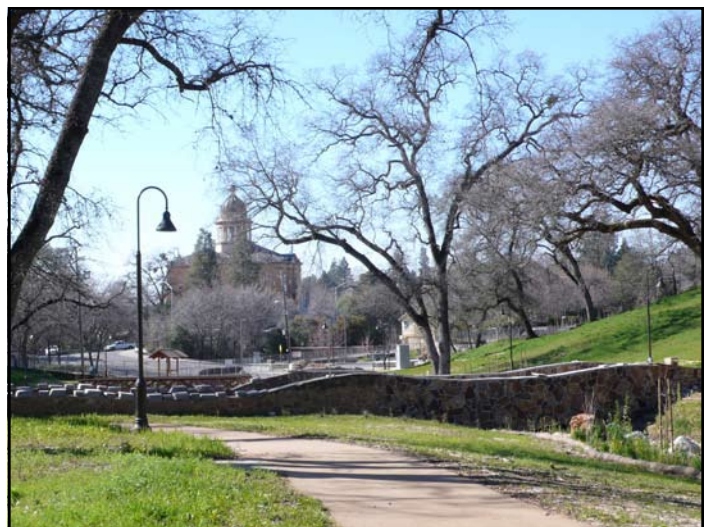
Retaining wall covered by black liner in first photo above, now visible, shows its architectural surfacing.

installing a pre-manufactured aluminum box culvert, slide gate and debris rack, constructing a 60 foot pedestrian bridge with concrete abutments, restoring the Cooper Amphitheater and stone bridge/stage, and planting more than 20,000 willows.

The contract also included structural and earthwork, complete site utility installation including secondary power, main switchboard, power and fixtures for path lighting and kiosks, an irrigation system, re-routing of storm sewer lines that drained into the creek, and a full conduit installation including stub outs for future improvements.

Accurate tracking and quality control were essential to successfully complete the 86 contract line items that comprised this complex project. The Park and Lincoln Creek opened to the general public on schedule and within budget.

The Project was awarded the Sacramento Section's Project of the year for Parks and Recreation (2009).



In this view of the completed project, the restored stream and park are visible in the foreground, with the historic Auburn Courthouse in the background. On the left, a new light pole shows a classic look. Farther behind the light pole, a new kiosk provides visitors with park information.

Region 9 News

*Society's State Government Relations
by Michael Thornton, P.E.*

As you know, our Society, formerly known as National, has a veritable cornucopia of committees with the goal of meeting ASCE Strategic Planning objectives. One of these many committees includes State Government Relations (SGR). On behalf of Region 9, I serve our membership as chair of the committee. For those of you who didn't know such a committee exists, we do! For those of you wondering what the committee does, read on!

ASCE Society's Government Relations (GR) efforts are well documented e.g. report card efforts, This Week in Washington, key contacts (<http://www.asce.org/PPLContent.aspx?id=18068>), and relationships that ASCE staff has developed with National elected officials; they are doing a great job. SGR's goal is to replicate the national program in every state as much as possible, and where possible, to improve it.

In many States, with my home State of California being the greatest culprit, funding for infrastructure has moved in the wrong direction. Our primary goal is to put the brakes on these crazy policies. To do so, we must first develop a network of members to get involved. Second, we plan on educating these volunteers to become effective infrastructure stewards. Third, we must develop personal relationships with State legislators making sure they understand that infrastructure investment is vital to both our economy and to our future. Fourth, we need to make sure our voices are heard in numbers (i.e. State Key Contacts). Lastly, we must promote members to key State Committees or elected positions.

SGR is working hard to develop our network. As Uncle Sam said, "I (we) need you", get involved! During the Society's regional management conferences in January and February, the Society will be presenting State Government Relations as a breakout session. Sign-up for the conference and don't miss this breakout session. In addition, sections and the Region are working on GR workshops. They will be invaluable. These are the first steps to objectives 3 through 5 presented above.

It is clear that the efforts we have been making in the past are not cutting it, resulting in legislators cutting infrastructure. A new effort is needed and it is up to all of us to get involved. The profession has been good to us... it is our turn to be good to it!

Legislative Update from Region 9

by Richard Markuson

In 2010 ASCE Region 9 tracked 54 state measures and took positions on 17 bills – supporting ten, opposing six and co-sponsoring SR 33 commemorating Engineers Week. Of those 17, the Governor signed six, vetoed two and eight died in the legislature.

The Governor signed six ASCE supported bills including: **AB 1431** that adds a geologist or geophysicist to the Engineers and Land Surveyors Board to reflect the merger of the Geology board and **SB 294** that extended the sunset of the Engineers Board. **SB 346** that with certain exemptions, limits the use of copper in motor vehicle brake pads to no more than five percent by weight on or

after January 1, 2021, and no more than 0.5 percent by weight on or after January 2025. **SB 1008** that authorizes engineers and land surveyors to operate within their scope of licensure, and to conduct business as a limited liability partnership (LLP) similar to that of architects, certified public accountants and attorneys. **SB 1284** that exempts certain waste discharge reporting violations from existing mandatory minimum penalties (MMPs). **SB 1349** that amends the State Endangered Species Act to allow an experimental population of Chinook salmon to be reintroduced into the San Joaquin River as part of a settlement approved by Congress.

The Governor vetoed two ASCE supported bills: **AB 1793** (Support) that clarified the ability of Common Interest Developments (CIDs) to prohibit artificial turf for use in water conservation programs. ASCE obtained amendments to make more explicit the ability of CID governing entities to adopt design standards. The Governor said: "*CIDs provide a system of self-governance through a community association, responsible for managing, maintaining, and repairing the common areas, and have the authority to enforce special rules. Decisions such as these regarding the use of artificial turf can be made by the homeowners and amended into their governing documents.*" **AB 2304** (Support) that would have required local agencies to map groundwater recharge areas and identify and describe areas that substantially contribute to the replenishment of the groundwater basin. His veto message stated: "*I am concerned about the impact this bill could have on privately-owned properties, ... Once mapped... the bill intends that these lands will be rezoned to restrict their use to being a groundwater recharge area. Property law in California already allows landowners and water districts to ... come to a private agreement about how they can manage both their land and water resources ... maintaining this current system allows them to work together to develop solutions. Unfortunately, this bill would eliminate this type of flexibility and negotiation between a landowner and a water district.*"

Two bills ASCE did not take a position on were also signed. Engineers in public and private practice are encouraged to review these measures with their legal counsel as the bills affect solicitations, indemnities and the design professional's lien (DPL) rights.

SB 972 revises the existing indemnity statute regarding public works contracts with design professionals to clarify that the duty to indemnify, including the duty and the cost to defend, is regulated by the statute. The bill further requires that all contracts and all solicitation documents, including requests for proposal, invitations for bid, and other solicitation documents between a public agency and a design professional are deemed to incorporate the foregoing statute by reference. **SB 189** is a comprehensive revision to mechanics lien law and makes changes to Civil Code §3319, 3320 & 3321. While the bill does not make substantive changes to the DPL, the bill makes changes to notice requirements and any engineer who deals with the DPL needs to be aware of the changes.

In 2010 Governor Schwarzenegger has signed 726 bills and vetoed 298.

For more information on ASCE's legislative program, contact Dolores Ventura – Chair of ASCE Region 9 Government Relations Committee, Mark Norton, Chair of the ASCE Region 9 Water and Environment Committee or Richard Markuson, ASCE Region 9 Lobbyist (richard@pacificadvocacygroup.com).